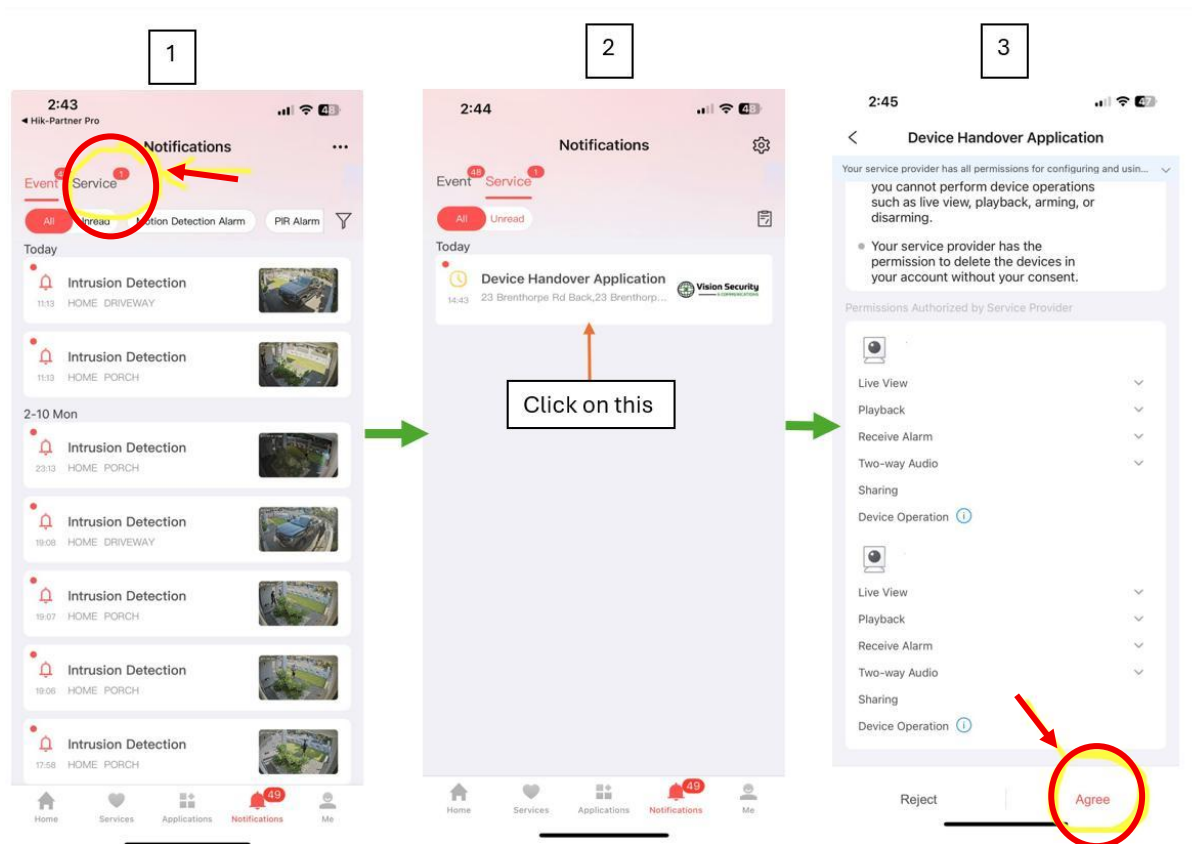


# USER GUIDE

## ACCESS YOUR SITE CAMERA

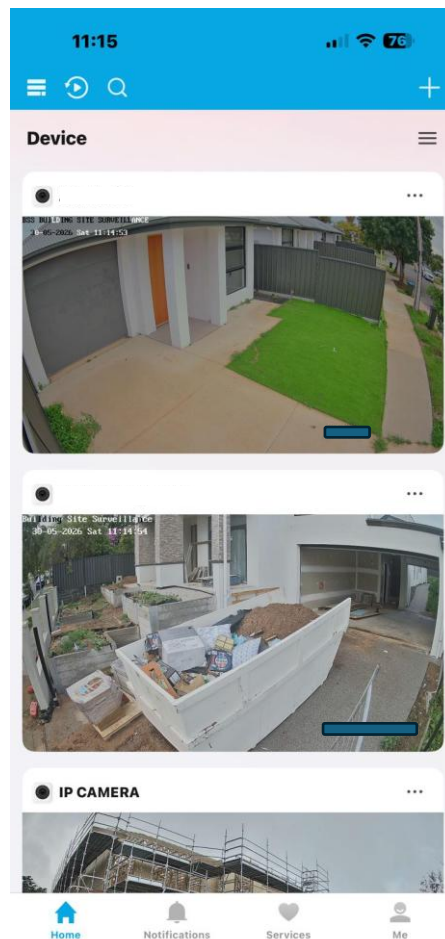
1. Download Hik-Connect
2. Register new account with email OR alternatively, if you are already using this app, press ME button at bottom and send a screenshot to us so we can send you a request to accept to view device.
3. To accept the request send by us please follow the steps in image shown below:



## LIVE VIEW

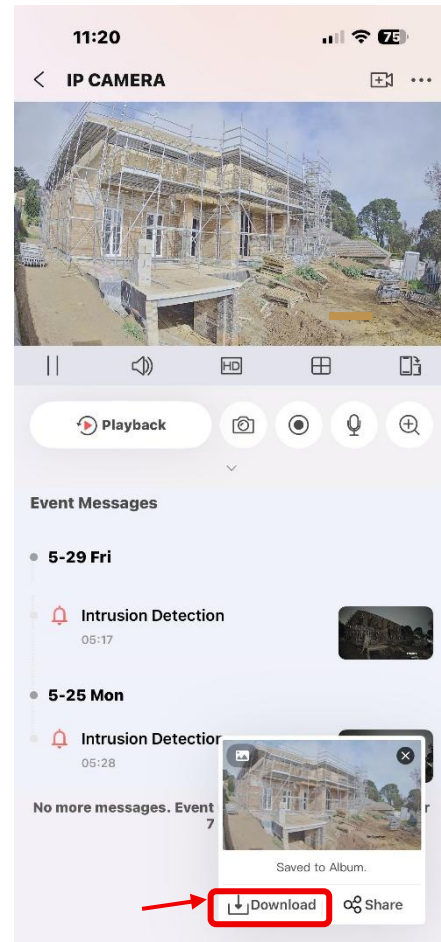
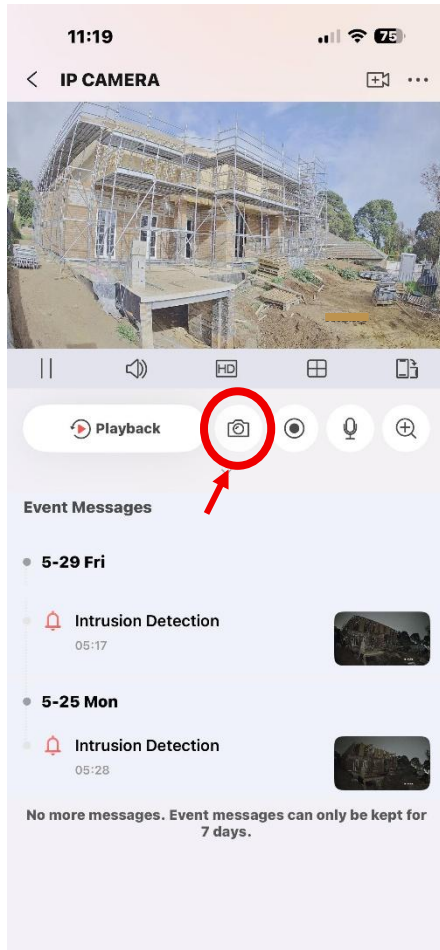
View your system live anytime, anywhere through the mobile app. Please note that live viewing will consume mobile data.

To access live viewing, select either the camera image thumbnail or the camera name listed in the app (for example, *#1 – Site Name*).



## Live View Features

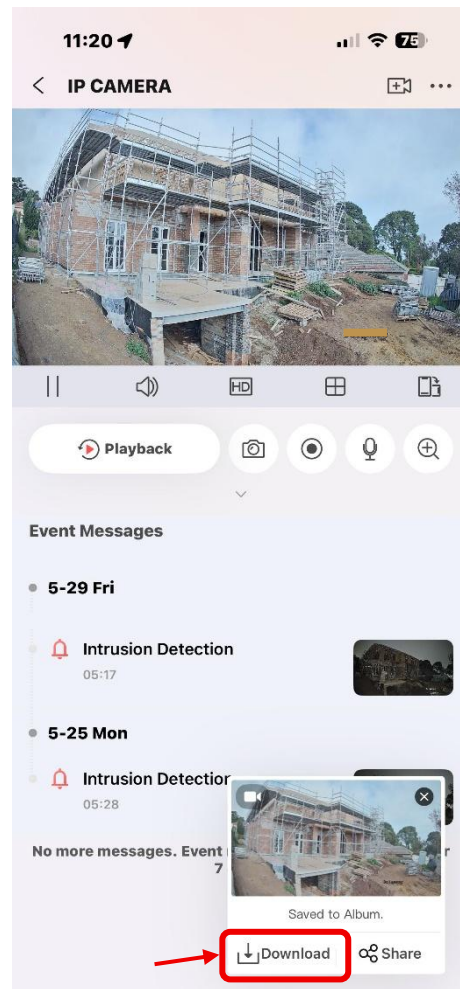
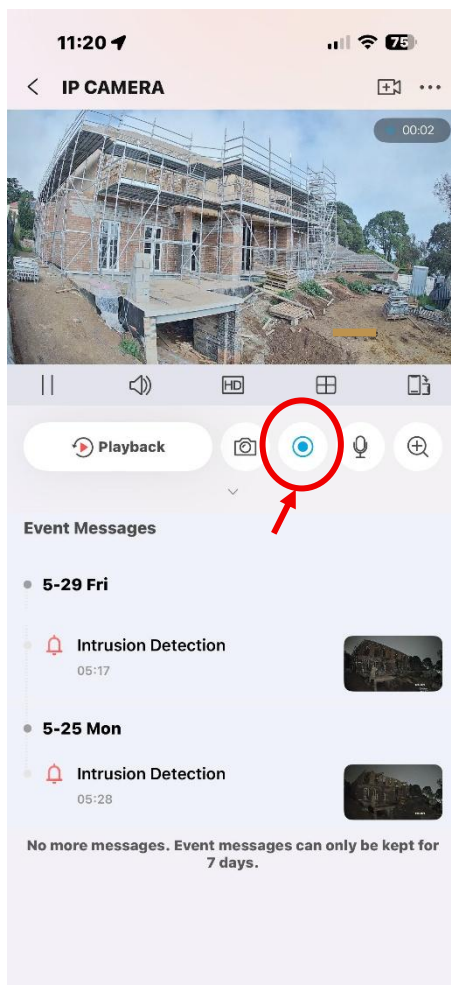
- **Snapshot:** Tap the **camera icon** to capture a snapshot of the current view and save it to your phone.



**Recording:** Tap the **record icon** (next to the camera icon) to record the live view and save the video to your phone., tap the **Record** button until it turns **red**. The footage currently being viewed will begin recording and be saved in **5-minute segments**.

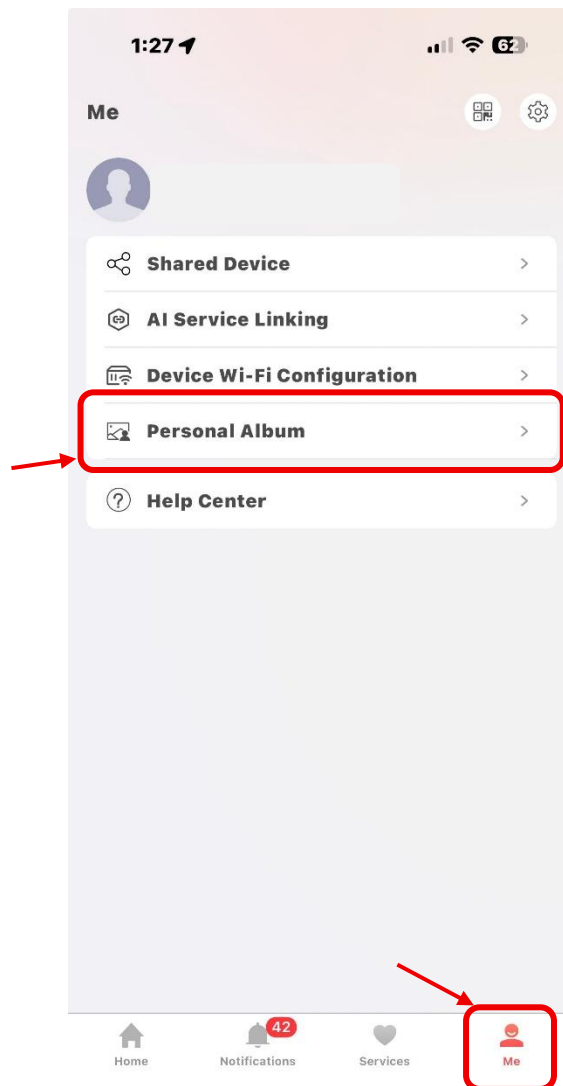
Once you have captured the required footage, tap the **red Record** button again to stop recording and save the file to your device.

Once the recording has been saved, a **"Saved to Album"** notification will appear in the bottom-right corner of the screen. You can then download this file by **pressing Download**. This file will now be saved to your **mobile Gallery/ camera roll**.



## Personal Album

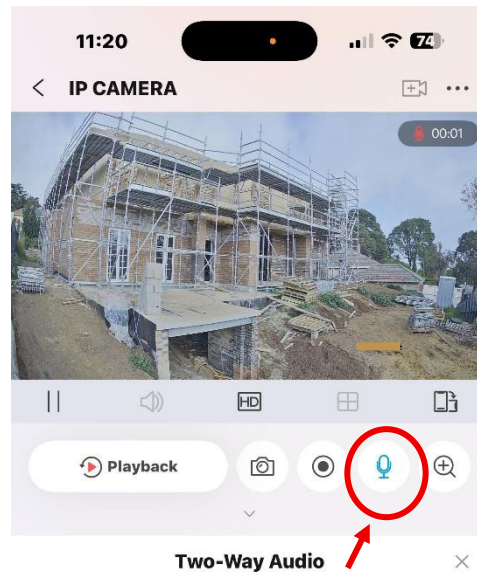
All footage recorded using the steps above is saved to your **Personal Album**. To access it, tap **Me** in the bottom-right corner of the app, then open **Personal Album**.



From here, you can view and download your saved recordings directly to your phone. Please note that only footage manually recorded using the record function will appear in the Personal Album.

Once downloaded, the footage will be available in your phone's **Photo Album**.

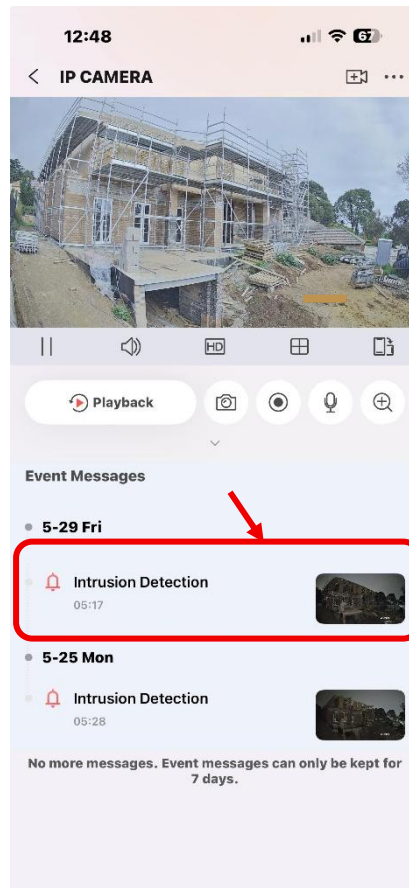
- **Two-Way Audio:** Tap the **microphone icon** to speak with anyone on site using two-way audio.



Talking...

## Event Messages

View the latest recorded events, such as **Intrusion Detection** or **Sudden Scene Change**. Tap any event to play back the recorded footage.



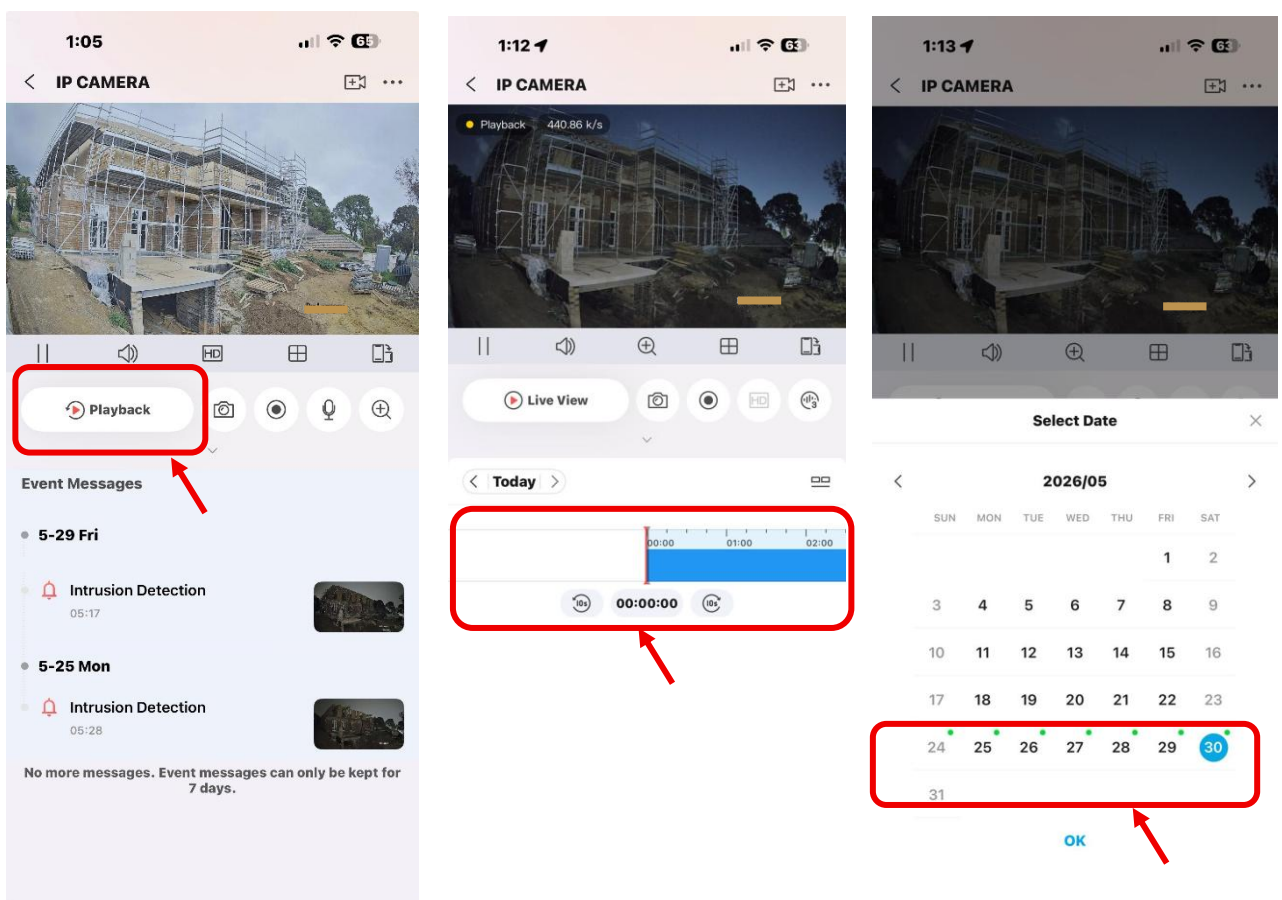
## Playback

Tap the **Playback** button to review footage stored on the camera.

Use the **Playback** screen to review any footage stored on your system. To view recordings from a different day, tap the **date** and select the required date.

To navigate to a specific time, drag the **timeline** at the bottom of the screen. **Coloured sections** indicate periods where footage has been recorded.

Recorded footage can be saved to your phone using the recording instructions outlined above.



## INTRUSION ZONES

The VX Site Cameras uses **intrusion detection zones**, designated areas within the camera's view that trigger the onsite siren, strobe light, and a notification to your device when entered.

These zones help reduce false alarms by allowing us to set **minimum and maximum object sizes** that will activate an alert. For accurate detection, our cameras have an effective intrusion detection range of up to **25 metres**. Beyond this distance, detections may be less reliable and could result in missed alerts or false alarms.

It is important to note that **not all areas visible on the camera will trigger an alert**. For example, if a camera monitors both a construction site entrance and part of a public footpath, the intrusion zone can be configured to start just inside the site boundary. This prevents pedestrians on the public path from triggering alarms, while still ensuring that anyone entering the site activates the system.

Although areas outside the intrusion zone will not generate alerts, the camera will still **record all visible activity** within its field of view. Any movement shown in the live camera feed should be available for playback and review.

If you require any changes to your intrusion detection schedule or detection zones, please email our support team for assistance [support@vxsitecameras.com.au](mailto:support@vxsitecameras.com.au)